

# **CASE** Compact Track Loaders

CONSTRUCTION

ALPHA SERIES



RADIAL

TR270

TR310

TR340

VERTICAL

TV370

TV450

**SINCE 1842**



TR270



TR310



TR340



TV370



TV450

# *Powerful, comfortable, maneuverable, versatile.*

Alpha Series compact track loaders bring together top-tier power, industry-leading dump height, quick-change versatility and spacious CASE comfort—all with the tracked benefit of excellent stability and flotation. All vertical and radial lift pattern models available use proven Tier 4 technology tailored to the typical work environment of each machine, requiring little to no extra effort from you.

- + Powerful breakout force and auxiliary hydraulics
- + Industry-leading visibility
- + Spacious, easy-entry operator environment

- + EZ-EH speed and control customization
- + Maintenance-free Tier 4 Final emission solutions
- + Easy attachment versatility



# PURPOSE-BUILT PERFORMANCE

## **OPERATING CAPACITIES FOR REAL-WORLD WORK**

CASE compact track loaders are engineered to deliver rated operating capacities (ROC) that match the type of applications they operate in. Mid-range models combine power and versatility to tackle most tasks. Our large-frame loaders are built for heavy-duty lifting with operating capacities up to 4,500 lb.

## **BREAKOUT FORCE**

Our lineup delivers some of the best bucket breakout force out there. We know prying and scooping is where muscle matters, and with CASE, you can be confident you have the power you need.

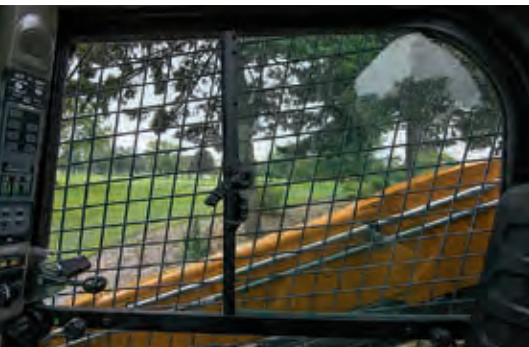
## **AUXILIARY HYDRAULIC PACKAGES**

Need a little extra power with your CTL? The Alpha Series puts up to 4,000 psi at your disposal, at 35 gpm, to run demanding attachments longer. Auxiliary hydraulic package options include standard, high-flow and enhanced high-flow, with secondary auxiliary hydraulics available for implements requiring multiple simultaneous movements.



**INDUSTRY-LEADING VISIBILITY**

Excellent forward sightlines, low threshold, ultra-narrow side screens, reinforced skylight, cab-wide rearview mirror, large rear window and standard 360° lighting package give operators excellent views of the bucket or attachment, over the tracks and all around the machine, day or night.



## TIER 4 DONE RIGHT, MADE EASY

One solution does not fit all. CASE carefully considered each machine's application, life expectancy, maintenance needs and operators. That's why every CASE compact track loader features a proven Tier 4 Final solution tailored to that model. The result? Compliance without compromise or complexity.

CASE Tier 4 Final certified equipment is easier to maintain and, unlike competitive models, won't require you to master additional maintenance procedures. In fact, most CASE machines have maintenance-free emission solutions, so you can stay focused on your work—and not maintaining your machine.

### CASE Tier 4 Final Solutions in Simple Language

#### CEGR

**What it means:** Cooled Exhaust Gas Recirculation. For Tier 4 Final, it works with a combination of the after-treatment technologies listed below.

**What it means to you:** As an in-engine system, CEGR requires no operator maintenance or management. CEGR is included in all CASE compact track loader models.

#### DOC

**What it means:** Diesel Oxidation Catalyst. The DOC oxidizes the machine's exhaust to create heat and manage emissions.

**What it means to you:** DOC is a maintenance-free solution—no fluids to add and no filter to replace.

#### SCR

**What it means:** Selective Catalytic Reduction. It's a simple after-treatment solution that combines DEF (Diesel Exhaust Fluid) with exhaust to convert emissions into nitrogen and water. DEF is a non-toxic liquid that reacts with engine exhaust in the presence of a catalyst to perform the emissions conversion.

**What it means to you:** Because SCR is an after-treatment system, it lowers exhaust temperatures and does not require unproductive fuel use associated with burning off particulate matter—great for larger engines. This offers a significant reduction in fuel use and has no DPF to replace. Keeping it running is simple: just top off your DEF when refueling. Fuel savings, lower maintenance cost and greater productivity will help lower total operating costs for the life of the machine.



*We made it simple.  
The right solution for the  
right machine for the task.*

	TR270	TR310	TR340	TV370	TV450
<b>Gross HP</b>	74	74	90	74	90
<b>Maintenance-Free Emissions Systems</b>	✓	✓		✓	
<b>Minimal DEF Required</b>			✓		✓
<b>No DPF to Replace</b>	✓	✓	✓	✓	✓
<b>Increased Fuel Efficiency</b>	✓	✓	✓	✓	✓
<b>Tier 4 Final Solution</b>	CEGR DOC	CEGR DOC	CEGR SCR	CEGR DOC	CEGR SCR



## ***EASY TO ENTER, HARD TO BEAT***



### ***LOW GROUND PRESSURE***

When protecting the terrain is important, CASE compact track loaders boast a light footprint with ground pressure as low as 4.2 psi (29 kPa).





### **MORE SPACE, MORE COMFORT**

Every operator deserves to be comfortable. At nearly three feet wide and with a low, easy-entry threshold, CASE loaders have one of the roomiest ROPS/FOPS-certified cabs in the industry. Enclosed cabs are fully sealed and pressurized to reduce noise and dust and offer a radio, climate control system and heated seat option.

### **LOWER LOADER STOPS FOR GREATER GRADING**

The load belongs on the chassis. A CASE innovation, all CASE loaders offer a low loader frame support to help properly transfer the load to where it belongs: the chassis. Plus, interchangeable spacer “pucks” allow for arm-height adjustment to accommodate various tire diameters and attachment height requirements.

### **STANDARD 360° LIGHTING**

Seeing what's to the left and right, behind you and straight ahead—that's smart operation. All Alpha Series compact track loaders come standard with heavy-duty front and side lights and rear floodlights so operators can maneuver quicker and more confidently, day or night.

### **DOZER-STYLE UNDERCARRIAGE**

The dozer-style undercarriage and tracks are engineered to hold better on slopes and take command of muddy or sandy terrain. The rigid-track frame has fewer moving parts for greater durability and easier maintenance than suspension-track systems. Dig, doze, push and pry—there's so much it can do.

### **QUICK, TOOL-FREE SWITCHING**

Switch loader attachments without the added hassle of getting out of your cab. Standard Connect Under Pressure (CUP) manifolds facilitate fast, easy and tool-free connecting and disconnecting of hydraulic lines by releasing pressure into the standard case drain.

### **EFFORTLESS EZ-EH CONTROLS**

Operate the machine the way you like through the simple touch of a button on our EZ-EH controls. Quickly switch between personalized settings for speed and control customization; program up to nine different presets to recall operator settings for different jobs and different operators at the touch of a button. There's also an intuitive lockout menu and rocker switch to easily alternate between CASE “H” and “ISO” patterns.



**RENTAL**

Simple is powerful. In addition to class-leading strength, all CASE compact track loaders feature a universal coupler for expansive attachment versatility and offer EZ-EH controls with adjustable sensitivity.

# MAXIMIZE YOUR BUSINESS OUTPUT

CASE compact track loaders are compatible with more than 250 attachments including buckets, forks, brooms, augers, rakes, grapples, hydraulic hammers, snow accessories, bale spears and CASE compact wheel loader attachments.

All models come standard with a universal coupler that will work with numerous attachment manufacturers, meaning you can do more with a single machine to give your business even greater versatility. Consult your dealer for details.



Laser Grading Box



Mulcher



Rotary Cutter



Concrete Claw



Dirt and Foundry Bucket



Side Discharge Bucket



4-in-1 Bucket



Low-Profile Bucket



Scrap Grapple



Root Rake



Dozer Blade



Pickup Broom



Cold Planer



Rock Saw



Auger



Trencher



Vibratory Roller



Bale Handler



Pallet Forks



Arctic® Sectional Sno-Pusher™

## AUXILIARY HYDRAULIC PACKAGES AVAILABLE



Standard



High-Flow



Enhanced High-Flow



Secondary Auxiliary



Front Electric/  
Multi-Function

## INTEGRATED HYDRAULIC QUICK COUPLER

Quickly switch attachments from the comfort of the cab.



SEE OUR FULL LINE AT [CASECE.COM/ATTACHMENTS](http://CASECE.COM/ATTACHMENTS)

## **MATCH THE LIFT TO THE TASK**

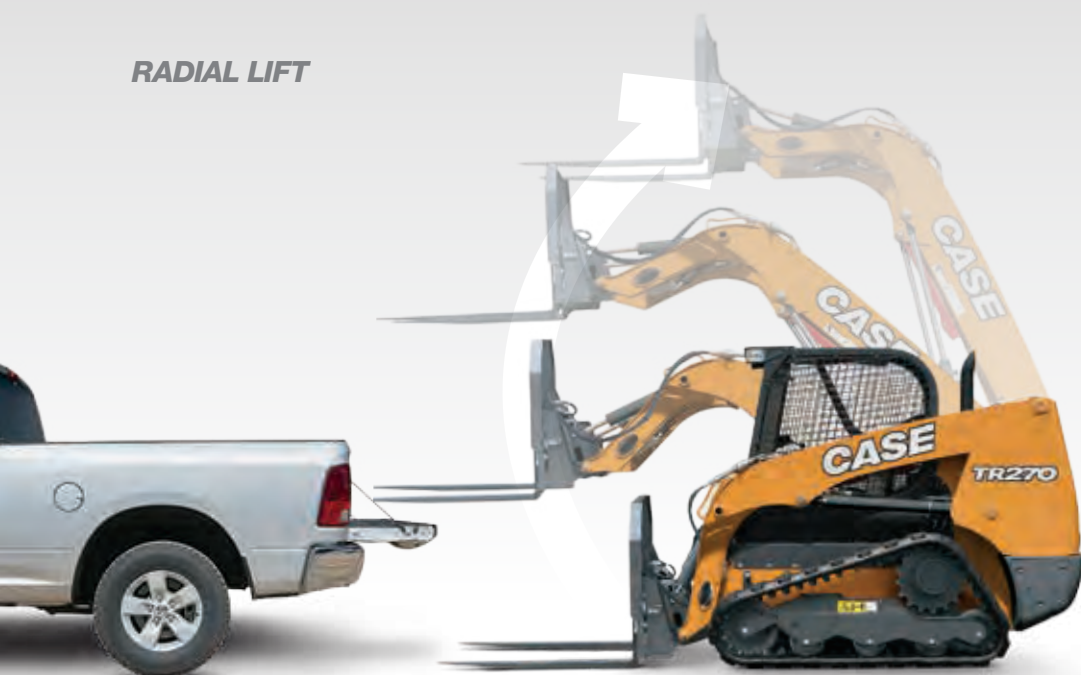
The Alpha Series includes both radial-lift and vertical-lift models. The benefits depend on your application. That's why CASE offers both lift patterns in various sizes to make sure you have the right machine for the job.

### **VERTICAL LIFT**



Vertical-lift machines are engineered for lift-and-carry and truck-loading jobs. The geometry of the dual arm allows the load to rise directly up, providing maximum reach at full height. Vertical-lift machines are ideal for reaching over the side of and into the middle of high-side trucks.

### **RADIAL LIFT**



Radial-lift machines are engineered for digging, prying and pushing. The angle of the arm ties directly into the chassis for superior strength when digging and pushing. It also provides maximum reach at the operator's head height, making it perfect for loading and unloading pallets from trucks.



#### **AGRICULTURE**

Move more bales. Check off more chores. With a full range of sizes, increased reach and over 250 attachments, CASE compact track loaders help producers and ranchers lift, load, carry and move more, all year long.

## LANDSCAPING

Whether pallet loading, earthmoving or hauling materials, CASE compact track loaders combine power, universal attachment versatility and year-round cab comfort options—all in a lineup with low ground pressures that won't damage lawns or finished hardscapes.





**CASE**

**TR310**

**RESIDENTIAL  
CONSTRUCTION**

Working in close quarters? User-friendly EZ-EH controls can adjust sensitivity for precise maneuvering. Plus, our industry-leading visibility provides clearer lines of sight around, above and behind the machine. It all results in smoother, more productive operation.

# MAINTENANCE MADE EASY

## NO TOOLS NECESSARY

CASE loaders continue the hallmark of simple serviceability with features like tool-free access to the oil cooler, radiator and other routine maintenance points.

## LOW MAINTENANCE

Maintenance is a breeze. Regular maintenance points are grouped into a single area under the engine compartment cover and door. With swing-out doors, a single, easily removable side panel and the removal of two nuts, the entire cab swings forward, out of the way, to access the entire drivetrain compartment for easy repair and inspection.

### Easy access to everything

- 1 Easy-tilt cab access to powertrain
- 2 Hydraulic pressure release valve
- 3 Battery
- 4 Engine oil filter
- 5 DEF tank\*
- 6 Hydraulic fill
- 7 Master disconnect switch
- 8 Air filter
- 9 Hydraulic filter
- 10 Engine oil fill
- 11 Hydraulic site gauge
- 12 Fuel filter with WIF sensor
- 13 Heavy-duty rear door

\*DEF = Diesel Exhaust Fluid  
Only available on 90 hp machines.







## **SUPPORT COMES STANDARD**

### **BASE & EXTENDED LIMITED WARRANTY COVERAGE\***

#### **1-YEAR/UNLIMITED-HOUR FULL-COVERAGE BASE LIMITED WARRANTY**

#### **2-YEAR/2,000-HOUR EXTENDED LIMITED ENGINE WARRANTY**

Discuss the extended engine warranty coverage details with your dealer.

### **UPTIME SOLUTIONS**

Your CASE dealer can provide solutions to meet all your needs and keep you productive.



### **STRONGER PRODUCT SUPPORT SOLUTIONS**

Your CASE dealer knows how you can best maximize your equipment investment and uptime—with genuine CASE parts, expert service and a complete range of product support solutions including CASE remanufactured and all-makes parts. CASE supports better parts availability and faster deliveries through nine parts distribution centers in North America and a forecasting system to ensure that the right parts will be there when you need them. And only CASE dealers have exclusive access to the Electronic Service Tool (EST) that quickly pinpoints machine issues. Just ask your dealer for details.



### **FLEXIBLE FINANCIAL OPTIONS**

Specialized finance programs and flexible leasing packages put you in the driver's seat of industry-leading CASE equipment while no-nonsense warranties and comprehensive protection plans ensure that your equipment is protected. As the only finance company dedicated to CASE, we offer strong products and services designed around your unique needs and are the only ones supported by the helpful service professionals at your CASE dealer.

\*Please see your CASE dealer for limitations, exclusions and confirmation of policies in effect.







# STANDARD AND OPTIONAL FEATURES

Standard ● Optional ○ Not Applicable —

OPERATOR ENVIRONMENT	TR270	TR310	TR340	TV370	TV450
Open Cab (No Heat or HVAC)	●	●	○	●	○
Enclosed Cab with Heater and AC	○	○	○	○	○
Enclosed Cab with HVAC, Demolition Door	○	○	○	○	○
Suspension Seat, Vinyl	●	●	○	●	○
Air Ride Suspension Seat	○	○	●	○	●
Three-Point Seat Belt, 2 in	●	●	●	●	●
Three-Point Seat Belt, 3 in	○	○	○	○	○
Two-Speed Controls	●	●	●	●	●
Hand Controls	○	○	○	○	○
Hand and Foot Controls	○	○	○	○	○
EZ-EH Controls	●	●	●	●	●
CASE SiteWatch™ Telematics	○	○	○	○	○
FOPS Level 2 Modification	○	○	○	○	○
Rearview Mirror	●	●	●	●	●
EXTERIOR	TR270	TR310	TR340	TV370	TV450
Tracks, 12.6 in (320 mm)	●	—	—	—	—
Tracks, 15.7 in (400 mm)	—	●	—	—	—
Tracks 17.7 in (450 mm)	—	—	●	●	●
Undercarriage Hose Covers	—	●	●	●	●
Heavy-Duty Rear Door	●	●	●	●	●
Beacon Light	○	○	○	○	○
Heavy-Duty Front Lights	●	●	●	●	●
Side Lamp	●	●	●	●	●
Four-Corner LED Strobe	○	○	○	○	○
Special Paint	○	○	○	○	○
Debris Seal Package	●	●	●	●	●

ENGINE	TR270	TR310	TR340	TV370	TV450
Aspirator	○	○	○	○	○
Block Heater, 120V	●	●	●	●	●
HYDRAULICS	TR270	TR310	TR340	TV370	TV450
Standard Auxiliary Hydraulics	●	●	●	●	●
High-Flow Auxiliary Hydraulics	○	○	○	○	○
Enhanced High-Flow Auxiliary Hydraulics	—	—	○	—	○
Secondary Auxiliary Hydraulics	○	○	○	○	○
Manual Coupler	●	●	○	●	○
Hydraulic Coupler	○	○	—	○	—
Heavy-Duty Hydraulic Coupler	—	—	●	—	●
Front Electric/Multi-Function	●	●	●	●	●
LOADER	TR270	TR310	TR340	TV370	TV450
Ride Control™	○	○	○	○	○
One-Way Self Level	○	○	○	○	○
Single-Point Lift Hook	○	○	○	○	○
Four-Point Lift Hook	○	○	○	○	○
Cylinder Guard	○	○	○	○	○
Extra Counterweight	○	○	○	○	○

# SPECIFICATIONS AND DIMENSIONS

SPECIFICATIONS	TR270	TR310	TR340	TV370	TV450
<b>Lift Configuration</b>	Radial	Radial	Radial	Vertical	Vertical
<b>Engine</b>	FPT F5HFL463 A*F001	FPT F5H FL463 A*F001	FPT F5B FL413 E*B002	FPT F5H FL463 A*F001	FPT F5B FL413 D*C001
<b>Gross Horsepower – hp (kW)</b>	74 (55)	74 (55)	90 (67)	74 (55)	90 (67)
<b>Net Horsepower – hp (kW)</b>	68 (51)	68 (51)	84 (63)	68 (51)	84 (63)
<b>Peak Torque – lb ft (Nm)</b>	232 (314)	232 (314)	282 (383)	232 (314)	282 (383)
<b>Displacement/ Cylinders – in<sup>3</sup> (L)</b>	207 (3.4) / 4	207 (3.4) / 4	207 (3.4) / 4	207 (3.4) / 4	207 (3.4) / 4
<b>Emissions Certification* Solutions</b>	Tier 4 Final Certified (CEGR, DOC)	Tier 4 Final Certified (CEGR, DOC)	Tier 4 Final Certified (CEGR, SCR)	Tier 4 Final Certified (CEGR, DOC)	Tier 4 Final Certified (CEGR, SCR)
<b>Rated Operating Capacity (ROC) 35% – lb (kg)</b>	1,890 (860)	2,170 (984)	2,380 (1 079)	2,590 (1 178)	3,150 (1 432)
<b>Rated Operating Capacity (ROC) 50% – lb (kg)</b>	2,700 (1 225)	3,100 (1 406)	3,400 (1 542)	3,700 (1 682)	4,500 (2 045)
<b>Tippling Load – lb (kg)</b>	5,400 (2 449)	6,200 (2 810)	6,800 (3 084)	7,400 (3 356)	9,000 (4 091)
<b>Bucket Breakout Force – lb (kN)</b>	7,270 (32.3)	8,680 (38.6)	8,700 (38.7)	8,776 (39.0)	9,188 (41.8)
<b>Standard Auxiliary Hydraulics – gpm (L/min)</b>	24.2 (91.5)	24.2 (91.5)	24.2 (91.5)	24.2 (91.5)	24.2 (91.5)
<b>High-Flow Auxiliary Hydraulics – gpm (L/min)</b>	32.4 (122.6)	32.4 (122.6)	37.6 (142.5)	37.6 (142.5)	39.5 (149)
<b>Operating Weight – lb (kg)</b>	8,270 (3 750)	8,880 (4 027)	10,000 (4 436)	9,630 (4 370)	10,610 (4 823)
DIMENSIONS	TR270	TR310	TR340	TV370	TV450
<b>Height to Bucket Hinge Pin</b>	123.0 in (3.12 m)	123.0 in (3.12 m)	126.5 in (3.22 m)	131.6 in (3.34 m)	131.6 in (3.34 m)
<b>Dump Height with Foundry/ Excavating Bucket</b>	98.2 in (2.50 m)	98.2 in (2.50 m)	102.4 in (2.60 m)	105.1 in (2.67 m)	101.9 in (2.59 m)
<b>Height to Top of ROPS</b>	78.7 in (1.99 m)	78.7 in (1.99 m)	80.4 in (2.04 m)	80.4 in (2.04 m)	80.4 in (2.04 m)
<b>Overall Length with Foundry/ Excavating Bucket</b>	129.6 in (3.29 m)	129.6 in (3.29 m)	143.5 in (3.65 m)	142.9 in (3.61 m)	144.6 in (3.67 m)
<b>Track Width</b>	12.6 in (320 mm)	15.75 in (400 mm)	17.7 in (450 mm)	17.7 in (450 mm)	17.7 in (450 mm)

\*Note:  
**CEGR** = Cooled Exhaust Gas Recirculation  
**DOC** = Diesel Oxidation Catalyst  
**SCR** = Selective Catalytic Reduction



**NON-RESIDENTIAL  
CONSTRUCTION**

Every minute counts. With features like maintenance-free Tier 4 Final emissions solutions, quick tool-free CUP hydraulics and our hallmark of simple serviceability, CASE saves you time and helps you reach your maximum productivity.



## **BUILDING A STRONG CASE**

Since 1842, we at CASE Construction Equipment have lived by an unwavering commitment to build practical, intuitive solutions that deliver both efficiency and productivity. We continually strive to make it easier for our customers to implement emerging technologies and new compliance mandates.

Today, our global scale combined with our local expertise enables us to keep customers' real-world challenges at the center of our product development. This focus has led to numerous innovations like Ride Control™, EZ-EH controls, blade shake, PowerLift™, over-center boom design and the peace of mind that only CASE ProCare provides.

Every CASE machine is backed by more than 300 North American dealer locations, thousands of OEM, remanufactured and all-makes parts, and flexible financing and insurance options that provide the kind of reliable, steadfast support you expect from a professional partner.

We are passionate about improving the lives of others, whether investing in our veterans or raising awareness about local infrastructure initiatives through Dire States. Our goal is to build both stronger machines — and stronger communities.

At the end of the day, we do what's right by our customers and our communities so that they can count on CASE.

**CaseCE.com/CTL**

©2019 CNH Industrial America LLC. All rights reserved. CASE is a trademark registered in the United States and many other countries, owned by or licensed to CNH Industrial N.V., its subsidiaries or affiliates. CNH Industrial Capital is a trademark in the United States and many other countries, owned by or licensed to CNH Industrial N.V., its subsidiaries or affiliates. Printed in U.S.A. Contains 10% post-consumer fiber.

Form No. CCE201911CTL  
Replaces Form No. CCE201901CTL

IMPORTANT: CASE Construction Equipment Inc. reserves the right to change these specifications without notice and without incurring any obligation relating to such change. Availability of some models and equipment builds vary according to the country in which the equipment is used. The illustrations and text may include optional equipment and accessories and may not include all standard equipment. Your CASE dealer/distributor will be able to give you details of the products and their specifications available in your area.



CASE Construction Equipment is biodiesel-friendly.

NOTE: All engines meet current EPA emissions regulations. All specifications are stated in accordance with SAE Standards or Recommended Practices, where applicable.



Always read the Operator's Manual before operating equipment. Inspect equipment before using it, and be sure it is operating properly. Follow the product safety signs and use any safety features provided.