

PRECISION AIR™ 5 SERIES AIR CARTS



PRECISION AIR™

5 SERIES AIR CARTS





PRECISION AIR 5 SERIES AIR CARTS

7 Models | Tank Sizes From 350 – 950 Bushels

THE TANK CAPACITY YOU'VE BEEN ASKING FOR.



MAXIMIZING THE POTENTIAL OF YOUR SEED AND FERTILIZER.

The Case IH focus is on improving your bottom line. The **exclusive** AccuSection™ modular metering system offers precision that significantly reduces waste. An expanded lineup of cartridges and rollers give you the freedom to plant almost any seed. Having larger tanks means you can cover more ground without stopping to refill. And design elements throughout let you have greater access and visibility for efficient performance and maintenance simplicity. Our goal is to help you make the most of every season, soil and seed. Case IH Precision Air 5 series air carts work to make that happen.

High-Efficiency Seeding	4-5
AccuSection Modular Metering System	6-7
Accessibility	8-9
Cartridges and Rollers	10-11
Tank Sizes and Configurations	12-13
Visibility and Displays	14
Specifications	15

HIGH-EFFICIENCY SEEDING HELPS YOU HIT TIGHT WINDOWS.

Make the most of short seeding windows with the Precision Air 5 series air carts. Designed with flexibility to fit your operation, the full lineup of air carts from Case IH helps increase seeding capacity and reduce costly overlaps. Different configurations provide the versatility for a variety of crops and fertilizer work, while our **exclusive** metering and seed delivery systems offer a host of gains in efficiency.





Precision Air 2355 air cart with Precision Disk™ 500 drill.



Precision Air 3555 air cart.



Precision Air 4585 air cart.



Precision Air 2355 air cart with row crop tires attached to Nutri-Tiller 955.



Precision Air 4765 air cart.



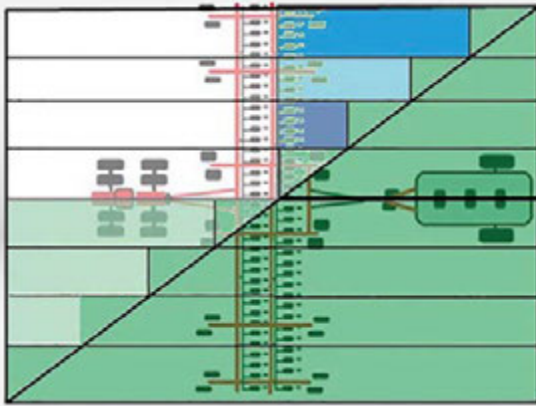
Precision Air 4955 air cart.

THE LINEUP OF PRECISION AIR 5 SERIES AIR CARTS INCLUDES:

- Seven models with tank sizes ranging from 350–950 bu.
- Large tanks that allow for up to 39 percent more product carrying capacity than previous models. Easily cover a 160 acres with one fill.
- **Exclusive** AccuSection modular metering system that reduces overlap and provides more accurate distribution across the air drill from individual header metering, which only Case IH offers.
- Tow-between configuration in sizes up to 580 bu.
- Tow-behind configuration in two styles:
 - Dual caster wheel
 - Steered wagon-style wheels
- Tow-behind, wagon-style configurations offer flexibility options for row spacing:
 - 30 in. row crop spacing (350 bu. only)
 - Controlled traffic for 120 in. spacing (up to 460 bu.)
- Straightforward user interface is displayed on the AFS Pro 700 or any ISO-compliant display.
- High flotation tire package available for better flotation and reduced compaction.
- Standard bin-level, low bin-level and tank differential pressure sensor.
- Air pack configuration available for Case IH Precision Disk Drill, Flex Hoe Air Drill and Nutri-Tiller 955 strip-till applicator.

ACCUSECTION: METERING THAT ADDS TO THE BOTTOM LINE.

With an updated design, an intuitive calibration wizard and other new features, the Case IH AccuSection modular metering control system can help you avoid overseeding and overfertilizing; increase accuracy; and get more product applied in a single pass. The full range of options helps you save money by reducing waste and gives you the ability to simply change your setup for different operations. Saving on seed and fertilizer adds to your bottom line and improves your agronomics.



Meter module bank.

EXCLUSIVE TECHNOLOGY TO GET MORE DONE IN LESS TIME.

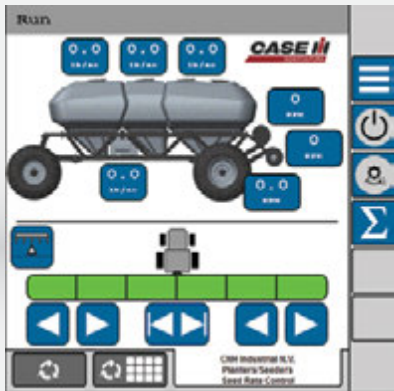
- Manual section control is standard.
- All new patented and **exclusive** AccuSection modular metering control system makes your work more efficient with the following:
 - Overlap control helps you avoid costly overseeding and overfertilizing during turns and in oddly shaped fields
 - Improved product rate range over previous meter systems
 - Independent metering by sections is **exclusive** to Case IH and allows for a higher level of accuracy and uniformity across the air drill
 - Meters are made of a unique, noncorrosive engineered resin polymer for durability

- Each meter module is driven by a 24-volt motor that delivers needed power and torque to seamlessly turn the seed drives at the required speed for precise and accurate rate control and adjustment

PRECISE PERFORMANCE WITH OUR SEED AIR DELIVERY SYSTEM.

Extremely efficient “flow thru” air design delivers unmatched air flow from the fans to the seed meters and on to the air drill. Because the design includes no extreme bends or twists like competitive air carts, air flow is efficient throughout the system. And with no mechanical components involved with the section control, greatly reducing the possibility for seed damage.

- Other features that enhance productivity include:
 - The industry-leading Type B distribution system provides unmatched accuracy. The primary product division is placed at the meter box with secondary division on the air drill. This creates consistency in delivery across the drill where accuracy counts
 - EZ Flow distribution headers provide unbeatable product flow and gentle seed handling, guiding seeds through high capacity fans
 - Blending flexibility – integrated controls provide options to distribute or blend any tank to any primary run
 - Easily hook and unhook the air cart from the air drill or fertilizer application unit with the new stainless steel couplers with over-center latches. The new connecting tree is located on the air cart hitch, combining all primary lines, hydraulics and electrical couplers in one place



PRECISE CONTROL AND VISIBILITY OVER YOUR APPLICATION.

- Intuitive user interface provides the information you need on a single run page—all accessed with the press of a button.
- Key equipment functions such as application rate, master apply, all tank on/off and rate control can be done on a single run page.
- Optional automatic sectional control can be set up to be controlled with the AFS Pro 700 or any ISO11783-compatible display.
- Variable rate application control is standard to better manage field variability.
- The calibration wizard makes setting rates for a desired crop easy and accurate.
- In-cab display also gives you full view of the tank bin level, in-tank camera feed, ladder position and any other warnings.
- Optional Wireless Flow Blockage Monitor (WFBM) for seed and fertilizer displays all manifold runs and sounds an alert for easy identification of blocked hoses.

CONSIDER THE COST OF OVERLAP IN JUST ONE FIELD:

Overlap Cost	Wheat	Canola	Soybeans
Drill Working Width	60 ft.		
Field Area	270 acres		
Field Type	Irregular		
Overlap Percentage*	9.05%		
Overlap Area — Field	24.4 acres		
Input Cost Per Acre (Crop + Fertilizer)	\$90.45	\$139.79	\$115.00
Cost Of Overlap in This Field	\$2,210.15	\$3,415.77	\$2,806.00
Per-Acre Cost for Entire Field	\$8.19	\$12.65	\$10.39
Total Farm Acre	1,250 acres	1,250 acres	1,250 acres
Total Cost	\$10,232.16	\$15,813.74	\$12,987.50

*15 feet of overlap on every headland pass, using manual control.

EASY ACCESS CLEARS A PATH TO PRODUCTIVITY.

Achieving maximum productivity means making it easy to do the simple things. Case IH Precision 5 series air carts include several features that make this possible, because we want to minimize the time you spend getting ready to go to the field. From ladders and railings to augers and conveyors, accessibility is optimized so you can get the air cart full and into the field and then do it all over again without difficulty.



CONVEYORS.

- All carts (other than 2355 model) can be ordered with a conveyor
- Operating speed twice as fast as our deluxe auger leads to increased productivity
- Easily control with a wireless remote
- Conveyors align with all tank openings from one position
- Optimized geometry for tank cleanout & fill positioning for augers and conveyors



AUXILIARY TANK.

- Uses smooth airflow from ground filling. No need to carry bags up a ladder or to a platform
- Provides smaller tank for low-rate crops for improved productivity
- Available on models 4465 and 4585 in 25-bu. capacity and models 4765 and 4955 in 35-bu. capacity
- Operator control conveniently mounted at the fill station

COLLAPSIBLE RAILING.

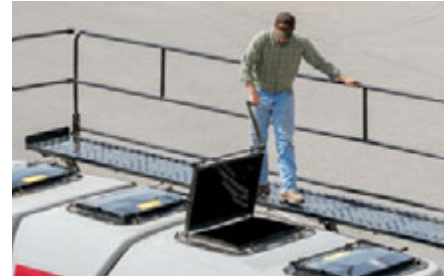
- No-tools-required collapsible railing adds safety measures while making it easy to lower the overall height of the unit when needed





■ AUGERS.

- Standard and deluxe augers can fill at 44 bushels per minute
 - Easily control with a wireless remote
 - Fill geometry allows auger hopper to remain in one spot while aligned with all tank openings



■ TANK LIDS.

- Designed with large opening and an effective seal when closed to ensure tank pressurization



■ EASY FILL.

- Large opening so you can easily fill tanks to capacity

■ FOLDING LADDER.

- Provides easy access to platform and tank lids
- Standard ladder sensor sounds alarm in the cab if the ladder is left in the down position
- Internal tank ladders provide easy access to the insides of tank



FLEXIBILITY THAT MAKES SEEDING SIMPLE, NO MATTER WHAT YOU'RE PLANTING.

Three different types of color coded cartridges and rollers give you the ability to plant almost any seed or apply fertilizer. The variety of cartridge and roller combinations are interchangeable which let you tailor the set-up to lower rates when splitting one product from multi tanks. The air cart design also makes the cartridges easy to remove, change and service, so you can save time while switching your setup to work with a different product.

CONFIGURATIONS TO UNLOCK THE POTENTIAL OF ALMOST ANY CROP.

CARTRIDGE	NARROW (WHITE)		HALF WIDTH (RED)		FULL WIDTH (BLACK)
					
METER ROLLER	COARSE (BLACK)	FINE (ORANGE)	MEDIUM (PINK)	COARSE (BLACK)	COARSE (BLACK)
					
CARTRIDGE RATE RANGE ⁽¹⁾	2.3 – 13 Kg/Ha (2 – 12 Lb./Ac)	2.8 – 11 Kg/Ha (2.5 – 10 Lb./Ac)	17 – 90 Kg/Ha (15 – 80 Lb./Ac)	56 – 224 Kg/Ha (50 – 200 Lb./Ac)	135 – 448 Kg/Ha (120 – 400 Lb./Ac)
Fertilizer	Not Recommended	Not Recommended	Recommended	Recommended ⁽²⁾	Recommended ⁽²⁾
Alfalfa	Recommended	Not Recommended	Not Recommended	Not Recommended	Not Recommended
Barley	Not Recommended	Not Recommended	Not Recommended	Optional	Recommended
Canaryseed	Not Recommended	Not Recommended	Optional	Recommended	Not Recommended
Canola	Recommended	Not Recommended	Not Recommended	Not Recommended	Not Recommended
Durum	Not Recommended	Not Recommended	Not Recommended	Optional	Recommended
Flax	Not Recommended	Not Recommended	Optional	Recommended	Not Recommended
Inoculant	Optional	Recommended	Not Recommended	Not Recommended	Not Recommended
Large Beans	Not Recommended	Not Recommended	Not Recommended	Optional	Recommended ⁽²⁾⁽³⁾
Lentils	Not Recommended	Not Recommended	Not Recommended	Recommended	Not Recommended
Mustard	Recommended	Not Recommended	Not Recommended	Not Recommended	Not Recommended
Oats	Not Recommended	Not Recommended	Not Recommended	Optional	Recommended ⁽²⁾
Peas	Not Recommended	Not Recommended	Not Recommended	Recommended ⁽²⁾⁽³⁾	Optional
Rye	Not Recommended	Not Recommended	Not Recommended	Recommended	Optional
Sorghum (Milo)	Recommended	Not Recommended	Not Recommended	Not Recommended	Not Recommended
Soybeans	Not Recommended	Not Recommended	Not Recommended	Recommended	Not Recommended
Wheat	Not Recommended	Not Recommended	Not Recommended	Recommended	Optional

¹ Cartridge rates listed apply for ground speeds from 4 mph to 5.5 mph. Actual application rates may vary depending on several factors, including but not limited to: product bulk density, particle size, seed treatment, moisture content, humidity, air pack configuration, row spacing and ground speed.

² A full-width cartridge is recommended for products having a larger particle size or those prone to bridging or seed flow issues.

³ For products with kernel diameter larger than 10 mm (3/8"), meter rollers may need to be adapted according to the meter roller trimming procedure for large products.



Meter calibration bag.



Quickly and easily choose primary runs.



CAPACITY TO SERVE GROWERS WHO DEMAND MORE.

Increased demands in the field require larger capacity from your seeding equipment. That's why Case IH offers air carts that can hold more, up to 950 bu. of seed or fertilizer. But beyond sheer volume, a variety of configurations also let you find the right match for how you work and what you plant. Because augers and axles are just as important as what's in the tank and getting maximum productivity from your workday requires rethinking every inch of the equipment you use.



AXLE CONFIGURATIONS.

- Tow-between and tow-behind axle configurations on all models except 760 and 950 bu. air cart.
- High-flotation tire package available on all models.
- 30 in. row crop configuration for 350 bu. air cart.
- 120 in controlled traffic configuration for 435 and 460 bu. air carts.

CONVEYOR/AUGER OPTIONS.

- Standard deluxe auger on most models includes wireless remote control for effortless starting and stopping.
- Auger delete option available on 350 bu. air cart.
- Conveyor available as standard or optional, depending on select models.
 - Maximum fill rate of 88 bushels per minute can fill a Precision Air 4955 air cart in less than 11 minutes

FLEXIBILITY AND VERSATILITY.

- Air pack configuration available for Case IH Precision Disk Drill, Flex Hoe Air Drill and Nutri-Tiller 955 strip-till applicator.
- Stainless steel couplers connecting primary lines make it easy to connect and disconnect the air cart from the air drill or fertilizer applicator.

VISIBILITY IS THE WAY TO IMPROVED PERFORMANCE.

With features inside and out, Case IH Precision Air 5 Series air carts give you optimum visibility for keeping track of your inputs. Sensors provide feedback, making it safer to work with new LED lights and easier to stay informed, reducing stress and saving your focus for other tasks.



MAKING IT EASY TO SEE WHAT'S HAPPENING INSIDE AND OUT — NO MATTER WHAT TIME IT IS.

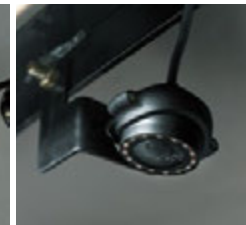
- Optional LED work lights are located on the platform, tank meter and fill areas, which help you operate your air cart with added safety no matter what time of day you need to work, fill or calibrate.
- Optional video camera packages are available. Include cameras for each tank plus one rear camera to provide ultrasonic live video feeds on the in-cab display.
- Standard factory-installed bin level and low level sensors accurately display tank and low bin alerts on the in-cab display.
- Standard factory-installed tank pressure sensors alert you of low tank pressurization caused by a tank lid left open.
- Standard factory-installed stair position sensor alerts your if the folding ladder is not stowed in the proper position for field operation.
- Optional tank full indicator lights alert you when the tank is full—eliminating the need for multiple operators.



Optional LED work lights.



Low level tank sensor.



Optional tank video camera.



Tank pressure sensors.



Tank full indicator lights.



Bin level sensor.



Stair position sensor.



Optional meter bank LED work light.

SPECIFICATIONS	PRECISION AIR 2355	PRECISION AIR 3445	PRECISION AIR 4465	PRECISION AIR 3555	PRECISION AIR 4585	PRECISION AIR 4765	PRECISION AIR 4955
Minimum HP Requirement for Single Shoot	60	70	75	85	90	115	140
Minimum HP Requirement for Double Shoot	90	100	105	115	120	145	170
Tow Position	Tow-behind / Tow-between					Tow-behind	
Capacity	350 bu. (12334 L)	435 bu. (15329 L)	460 bu. (16210 L)	555 bu. (19558 L)	580 bu. (20439 L)	760 bu. (26782 L)	950 bu. (33477 L)
Poly Main Tanks / Steel Auxiliary	2/0	3/0	3/1	3/0	3/1		
Auxiliary Tank Capacity	N/A		25 bu.	N/A	25 bu.	35 bu.	
Main Tank Compartment Size - US Bushels	160/190 bu.	140/105/190 bu.		190/105/260 bu.		230/170/325 bu.	325/170/420 bu.
Weight Tow-Behind (Empty)	14,351 lb. (6510 kg)	16,330 lb. (7407 kg)	17,622 lb. (7993 kg)	18,328 lb. (8254 kg)	19,620 lb. (8899 kg)	21,494 lb. (9750 kg)	31,438 lb. (14260 kg)
Weight Tow-Between (Empty)	14,380 lb. (6523 kg)	16,130 lb. (7316 kg)	17,382 lb. (7884 kg)	15,774 lb. (7104 kg)	17,026 lb. (7723 kg)	N/A	

PRODUCT DELIVERY

Type	Type B primary division at meter and secondary division on seeding implement						
Shoot Configuration	Double shoot (2 fans) standard (52 gpm max. hydraulic flow required) / Single shoot (1 fan) optional (26 gpm max. hydraulic flow required)					Double shoot (2 fans) standard	
Number of Meter Modules	Up to 10-runs						
AccuSection Control	Standard manual sectional control by individual meter with optional automated sectional control (requires Task Controller and GPS receiver)						
Meter Drive System	AccuSection Multi-Segment/variable rate metering						
Tank Fill Options	Standard auger	Deluxe/conveyor option				Standard Conveyor	
Auxiliary Tank Fill	N/A		Pneumatic-air delivery	N/A	Pneumatic-air delivery		
Monitor System	AFS Pro 700 or ISO 11783 (ISOBUS Compliant) display required for operation						
Sensors	Low bin level, ultrasonic bin level sensor, tank and meter pressure, wheel speed, GPS speed (optional), stair position, tank fill indicator						

TIRES

Base Front	500/50R17 149D I2 Dual castor			18.4-38 8PR R-1 Single		650/75R38 172A8 R-1W Single	800/70R38 176A8 R-1W Single
Front Hi-Flotation (Optional)	600/40-22.5 16PR I3 Dual castor			650/75R38 172A8 R-1W Single		800/70R38 176A8 R-1W Single	N/A
Base Rear - Tow-Behind	650/75R38 172A8 R-1W Single	800/65R32 167A8 R-1W Single		900/60R32 176A8 R-1W Single		800/70R38 CHO 181A8 R-1W Single	800/70R38 176A8 R-1W Dual
Rear Hi-Flotation - Tow-Behind (Optional)	800/65R32 AC70H Single	650/75R38 172A8 R-1W Dual		650/75R38 172A8 R-1W Dual		800/70R38 176A8 R-1W Dual	800/70R38 CHO 181A8 R-1W Dual
Base Rear - Tow Between	650/75R38 172A8 R-1W Single	800/65R32 167A8 R-1W Single		800/70R38 CHO 181A8 R-1W Single		N/A	N/A
Rear Hi-Flotation - Tow-Between (Optional)	650/75R38 172A8 R-1W Dual	650/75R38 172A8 R-1W Dual		650/75R38 172A8 R-1W Dual		N/A	N/A

DIMENSIONS

Height - with Handrails Folded Down / Up	12 ft. 10 in. (3.91 m)/15 ft. 8 in. (4.78 m)			13 ft. 4 in. (4.06 m)/15 ft. 8 in. (4.78 m)		15 ft. 8 in. (4.78 m)/17 ft. 6 in. (5.33 m)	
Width - Std. Flotation	13 ft. 10 in. (4.22 m)	18 ft. 5 in. (5.61 m)		15 ft. 2 in. (4.64 m)		14 ft. 11 in. (4.53 m)	21 ft. 2 in. (6.45 m)
Width - Hi-Flotation	13 ft. 10 in. (4.22 m)	18 ft. 5 in. (5.61 m)		18 ft. 5 in. (5.61 m) (TBH) 21 ft. 2 in. (6.46 m) (TBT)		19 ft. 5 in. (5.92 m)	N/A
Length - Tow-Behind, with Hitch Installed	22 ft. 2 in. (6.76 m)	25 ft. 3 in. (7.7 m)		44 ft. 4 in. (13.51 m)		37 ft. 8 in. (11.48 m)	46 ft. 8 in. (14.22 m)
Length - Tow-Between	26 ft. 9 in. (8.15 m)	34 ft. 9 in. (10.59 m)		40 ft. 4 in. (12.29 m)		N/A	
Ground Clearance	25 in. (635 mm)						



SAFETY NEVER HURTS!™ Always read the Operators Manual before operating any equipment. Inspect equipment before using it, and be sure it is operating properly. Follow the product safety signs, and use any safety features provided. CNH Industrial America LLC reserves the right to make improvements in design and changes in specifications at any time without notice and without incurring any obligation to install them on units previously sold. Specifications, descriptions and illustrative material herein are as accurate as known at time of publication, but are subject to change without notice. Availability of some models and equipment builds varies according to the country in which the equipment is used.

©2018 CNH Industrial America LLC. All rights reserved. Case IH is a trademark registered in the United States and many other countries, owned by or licensed to CNH Industrial N.V., its subsidiaries or affiliates. Any trademarks referred to herein, in association with goods and/or services of companies other than CNH Industrial America LLC, are the property of those respective companies. Printed in U.S.A. www.caseih.com

CIH18080101